

MCS 2200

Monitoring and Control System

1 80170601 3.01 WB DB TK , VOLUME S ALM LOW ALARM 2004-09-13 08:48:32 SAM Electronics

Alarm Sys. MACH. ALM Alarms 32 Man. Supp. 11 Watch ECR / ATTENDED Duty 2ND. ENGINEER Backup 1ST. ENGINEER

80170601	0,0 m3	80170801	3,2 m3
60100164	323,0 °C	60100170	19,2 °C

Lyngsø Marine

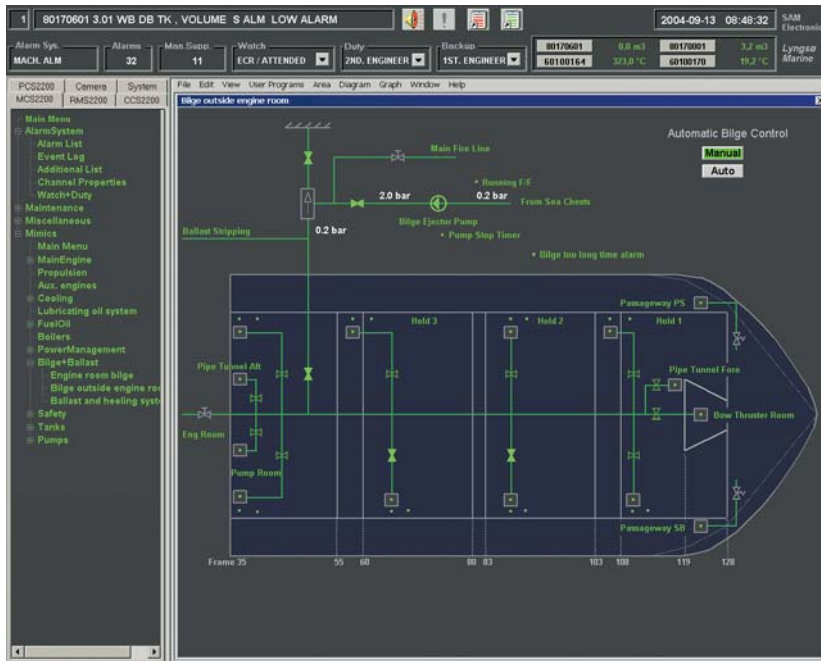
PCS2200 Camera System File Edit View User Programs Area Diagram Graph Window Help

MCS2200 RMS2200 CCS2200 **FW cooling system**

- Main Menu
- AlarmSystem
 - Alarm List
 - Event Log
 - Additional List
 - Channel Properties
 - Watch+Duty
- Maintenance
- Miscellaneous
- Mimics
 - Main Menu
 - MainEngine
 - Main engine
 - Main Engine Start Seq.
 - Main Engine Stop Seq.
 - Main Engine Quick Start
- Propulsion
 - Aux. engines
- Cooling
 - FW cooling system
 - SW cooling system
 - Lubricating oil system
- FuelO
 - Boilers
 - Power
 - Bilge+
 - Safety
 - Tanks
 - Tar
 - Tar
 - Tar

MCS 2200 Monitoring and Control System

MCS 2200 Overview of Features



Alarm and Monitoring

The MCS 2200 covers alarm and monitoring features

- Machinery alarm and monitoring for every type of vessel
- Cargo alarm and monitoring

Control and Integration

In addition to that, MCS 2200 provides control of all machinery systems

- Machinery control for all types of vessels
- Integration of extended functionality like PMS, propulsion control, etc.
- Cargo control for reefer container, tankers, loading calculator, etc.
- Interfaces to all kind of external systems

Decentralized Architecture

The MCS 2200 is formed in a highly decentralized architecture with

- Outstation
- Reporting
- Duty alarm system
- Operator workstation

The SOD 2200 provides the human machine interface. Comfortable data presentation as well as intuitive operation is assured via full colour graphic mimics which allow remote control of

Machinery Monitoring & Control

Fuel Oil Transfer System
Ballast and Bilge Control
Tank Level Gauging
S.W./F.W. Cooling Systems
Ventilation System
Diesel Engine Control
etc.

Integration

Power Management
Reefer Container Monitoring
Propulsion Control
“Loadstar” Loading Calculator
Live Video
etc.

The Modular and Flexible Solution

the respective process. Advanced system diagnostics facilitate commissioning and ensure easy operation.

The intelligent outstations FPD 2200 act as fully independent data processors and are linked by a redundant system net for data exchange.

All kind of custom made reports and journals as well as alarm and event logs can be generated on standard printers.

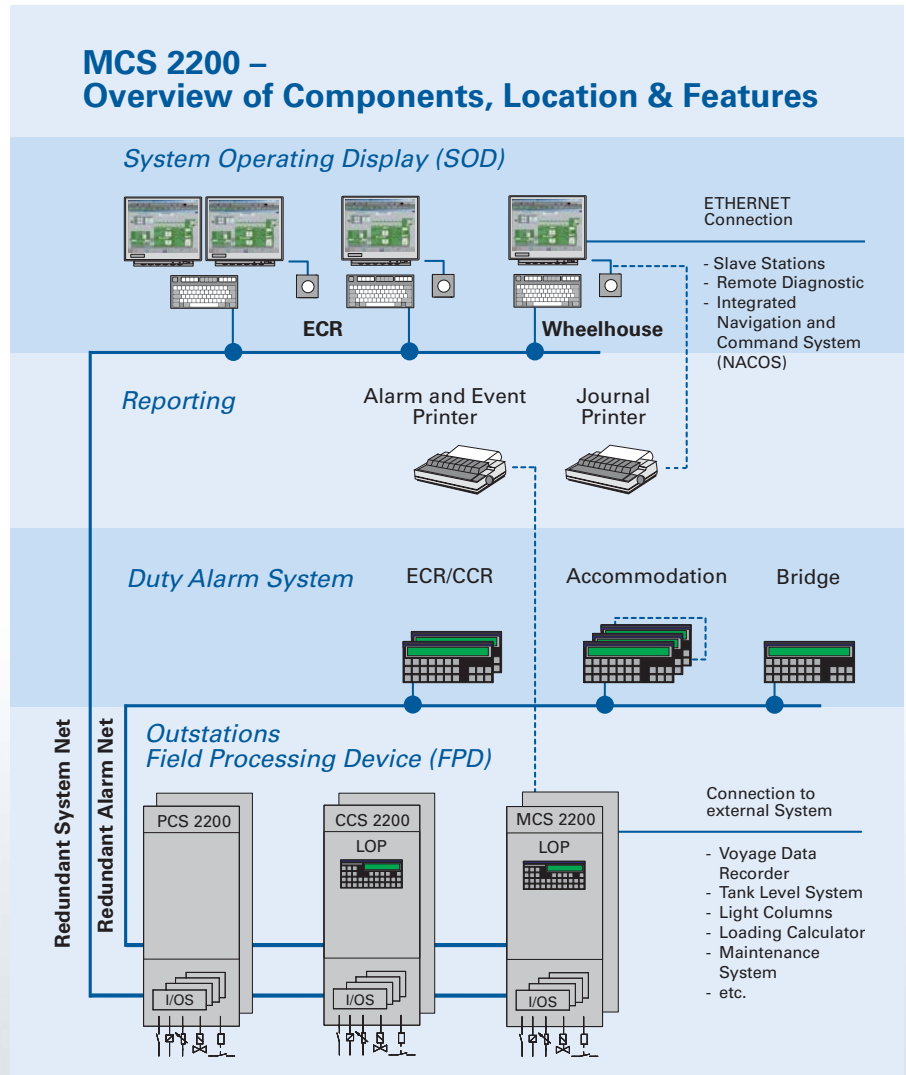
The duty alarm system integrates engineer call and alarm extension functions as well as the bridge watch alarm system. Various panels are distributed around the ship according to your specific requirements.

Modular and Flexible

The MCS 2200 is based on the standard hard- and software platform of the 2200 Automation series.

The hardware is formed by few standard modules minimising the spare parts for your ship.

The software is customised with one common engineering tool which is used for all applications of the 2200 series.



Field Interfacing

- External Power Management System
- External Tank Level Gauging System
- Voyage Data Recorder
- Maintenance System
- Light Column System
- etc.

Extended Functions

- Integr. Navigation & Command System (NACOS)
- Remote Diagnostics
- Slave Stations
- etc.

Competence in Automation



Lyngsø Marine A/S and SAM Electronics Automation Division are among the world's major suppliers of marine equipment with a long tradition in ship automation starting from the very beginning of ship-based computer technology in the 1950's.

Starting with a cooperation we have achieved true PartnerShip. In the process we have successfully merged our worldwide activities in

- Sales
- R&D and
- Service

based on a harmonized product portfolio and a common product family.

As a result our PartnerShip offers a wide range of cutting-edge automation solutions designed and produced with the aim of providing optimal

- Cost efficiency
- User-friendly operation
- Flexibility
- Reliability
- Safety

All this is backed by

- A worldwide service organisation
- Regional competence centers.

Our more than 10.000 installations worldwide are your guarantee for proven systems with unrivalled performance — all over the world for all kinds of vessels.



**Choose the Automation Specialists –
Lyngsø Marine and SAM Electronics**




an  communications company

Lyngsø Marine A/S

2, Lyngsø Allé
2970 Hørsholm · Denmark
Phone: +45 45 16 62 00
Fax: +45 45 16 62 62

E-mail: info@lyngsoe.com
www.lyngsoe.com



an  communications company

SAM Electronics GmbH

Automation
Behringstrasse 120
22763 Hamburg · Germany
Phone: +49 40 88 25 24 33
Fax: +49 40 88 25 41 16

E-mail: info@sam-electronics.de
www.sam-electronics.de